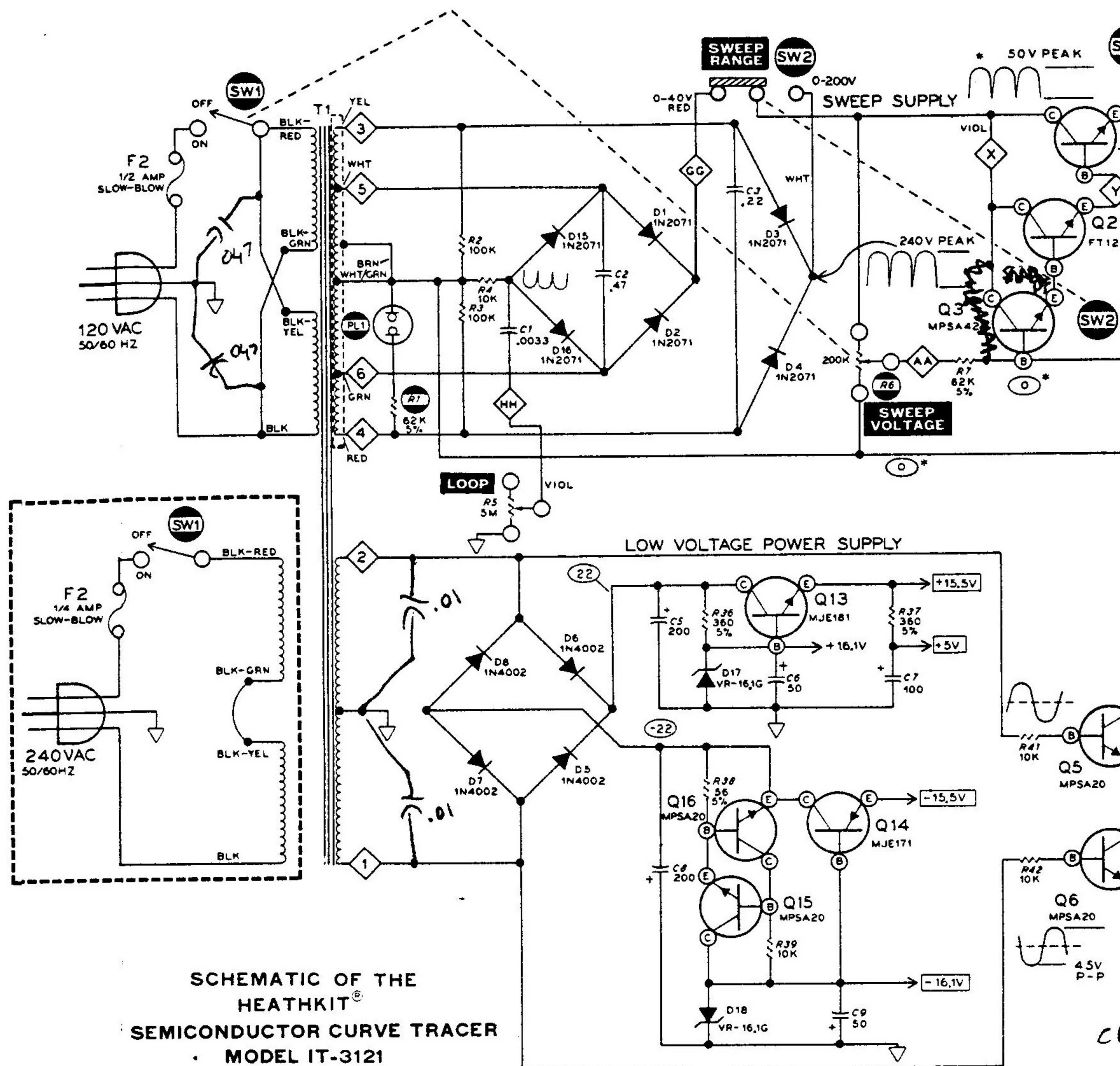


SCHEMATIC OF THE  
HEATHKIT®  
SEMICONDUCTOR CURVE TRACER  
• MODEL IT-3121

NOTES:

- ALL RESISTORS ARE 1/2 WATT UNLESS OTHERWISE MARKED. RESISTOR VALUES ARE IN OHMS (K=1,000 M=1,000,000).
- ALL CAPACITOR VALUES ARE IN  $\mu$ F UNLESS MARKED pF.
- REFER TO THE "CHASSIS PHOTOGRAPH" AND "CIRCUIT BOARD X-RAY VIEWS" FOR THE PHYSICAL LOCATION OF PARTS.
- ▽ THIS SYMBOL INDICATES GROUND.
- ◇ THIS SYMBOL INDICATES A LETTERED OR NUMBERED CIRCUIT BOARD CONNECTION.
- THIS SYMBOL INDICATES A PART NOT MOUNTED ON THE CIRCUIT BOARD.
- THIS SYMBOL INDICATES A DC VOLTAGE TAKEN FROM THE POINT INDICATED TO CIRCUIT BOARD GROUND WITH A HIGH INPUT IMPEDANCE VOLTMETER.
- \* THESE WAVEFORMS AND VOLTAGES WERE TAKEN WITH THE CONTROLS IN THE FOLLOWING POSITIONS.  
SWEEP VOLTAGE FULLY COUNTERCLOCKWISE  
SWEEP RANGE 0-40  
POLARITY NPN  
VOLT - CURRENT VOLTAGE  
STEPS / FAMILY FULLY CLOCKWISE  
STEP RANGE 1 VOLT / STEP





NOTES:

ALL RESISTORS ARE 1/2 WATT UNLESS OTHERWISE MARKED. RESISTOR VALUES ARE IN OHMS (K=1,000 M=1,000,000).

ALL CAPACITOR VALUES ARE IN  $\mu$ F UNLESS MARKED pF.

REFER TO THE "CHASSIS PHOTOGRAPH" AND "CIRCUIT BOARD X-RAY VIEWS" FOR THE PHYSICAL LOCATION OF PARTS.

▽ THIS SYMBOL INDICATES GROUND.

◇ THIS SYMBOL INDICATES A LETTERED OR NUMBERED CIRCUIT BOARD CONNECTION.

● THIS SYMBOL INDICATES A PART NOT MOUNTED ON THE CIRCUIT BOARD.

○ THIS SYMBOL INDICATES A DC VOLTAGE TAKEN FROM THE POINT INDICATED TO CIRCUIT BOARD GROUND WITH A HIGH INPUT IMPEDANCE VOLT-METER.

\* THESE WAVEFORMS AND VOLTAGES WERE TAKEN WITH THE CONTROLS IN THE FOLLOWING POSITIONS.

SWEEP VOLTAGE	SWEEP RANGE	POLARITY	VOLT - CURRENT	STEPS / FAMILY	STEP RANGE
FULLY COUNTERCLOCKWISE	0-40	NPN	VOLTAGE	FULLY CLOCKWISE	1 VOLT / STEP



