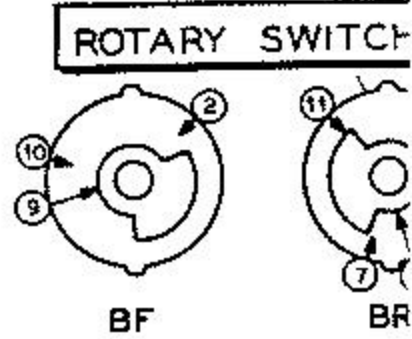
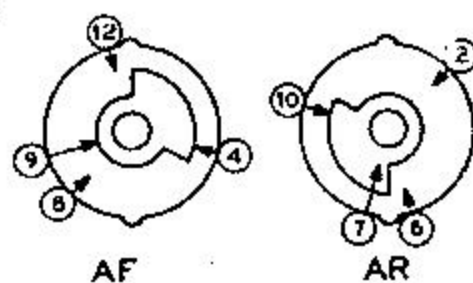
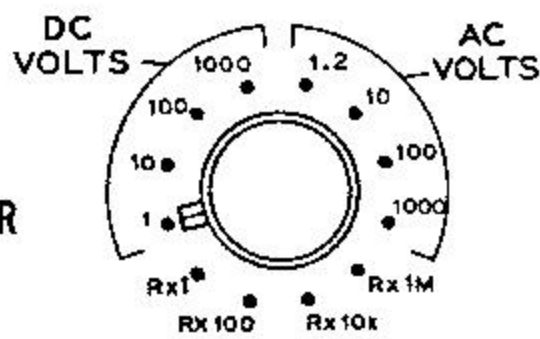


SCHEMATIC OF THE
HEATHKIT®
UTILITY SOLID STATE VOLTMETER
MODEL IM-17



2N5486

D S G



417-140

D

S



G

2N3393

E C B

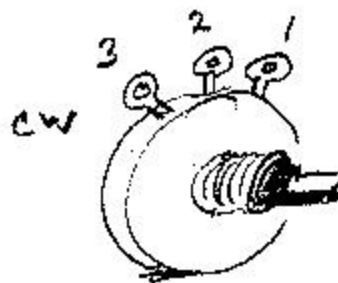


MPS-3393

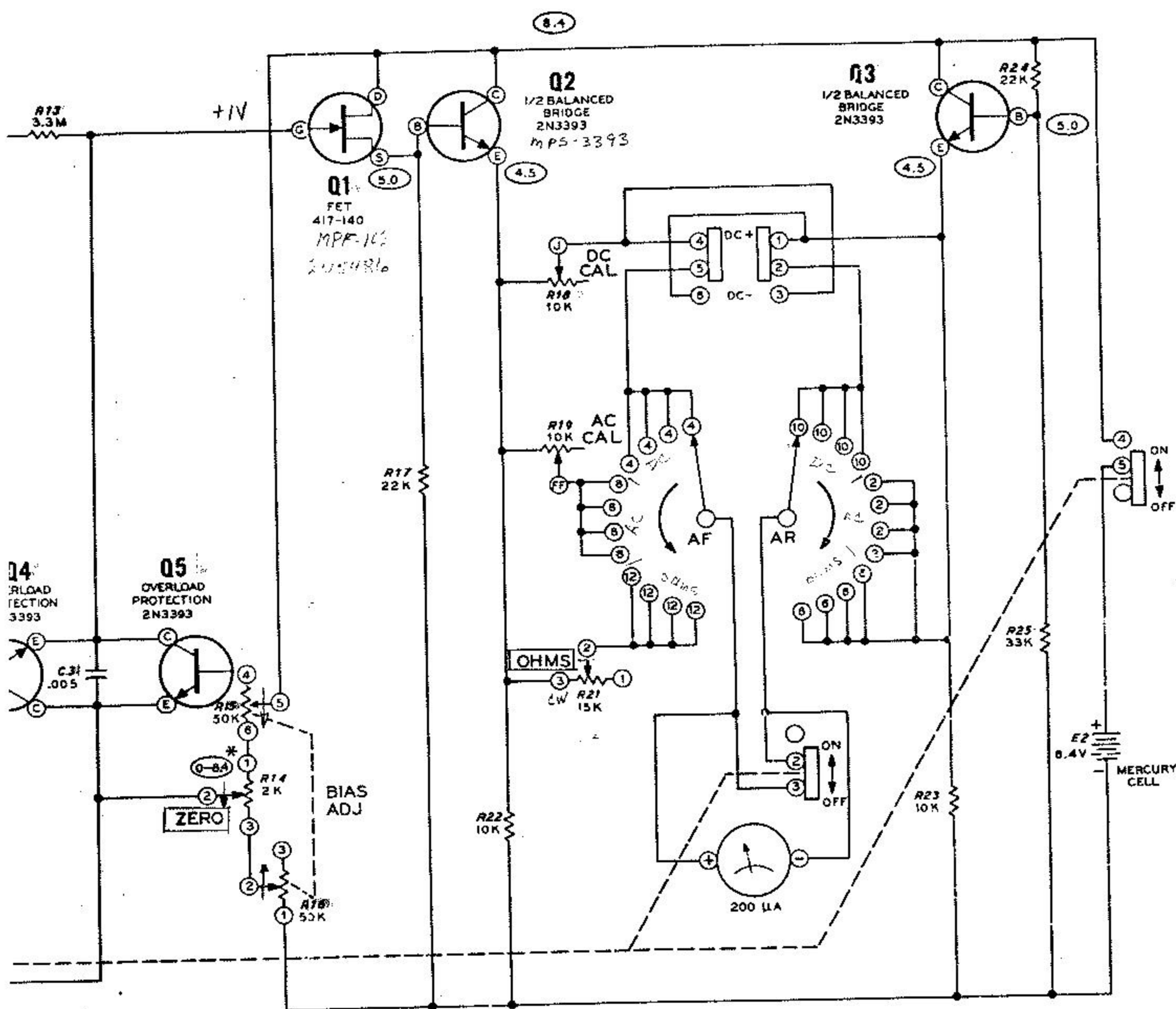
E B C



Bottom Views



DRAIN + SOURCE MAY BE INTERCHANGED



NOTES

F = FRONT, R = REAR
 ROTARY SWITCH IS SHOWN IN 1 VOLT DC POSITION
 ARROWS INDICATE CW ROTATION

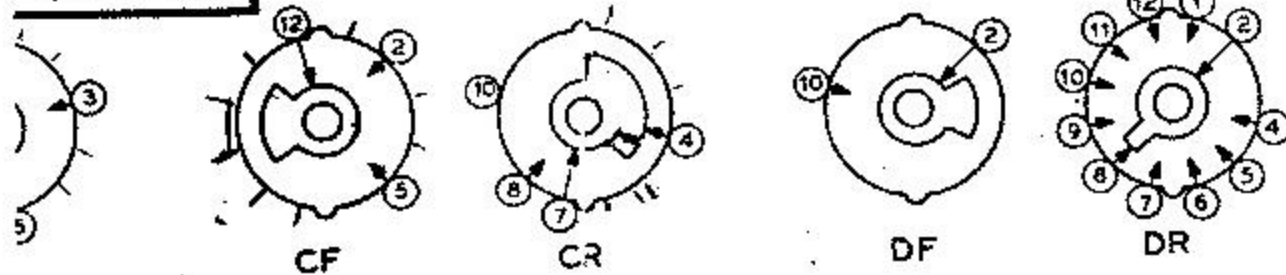
DC SWITCH SHOWN IN "DC+" POSITION
 ON-OFF SWITCH SHOWN IN "OFF" POSITION
 ALL CAPACITOR VALUES IN μF
 ALL RESISTORS ARE 1/2 WATT UNLESS MARKED OTHERWISE
 RESISTOR VALUES ARE IN OHMS (K = 1000, M = 1,000,000)

○ = DC VOLTS TO NEGATIVE SIDE OF E-2 MEASURED WITH
 AN 11 MEGOHM INPUT IMPEDANCE ELECTRONIC READINGS
 MAY VARY BY 10%.

RESISTORS NOT NUMBERED CONSECUTIVELY.

* DEPENDS ON SETTING OF BIAS ADJ AND ZERO CONTROLS.

WAFERS



PC MOUNTED COMPONENTS