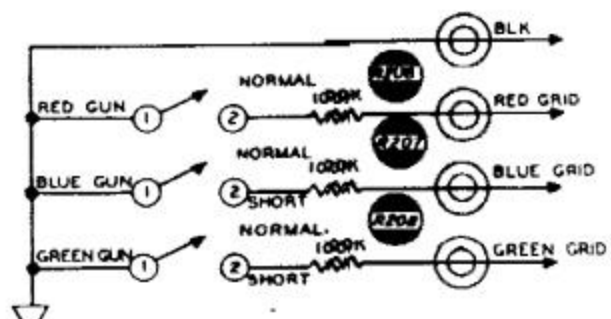
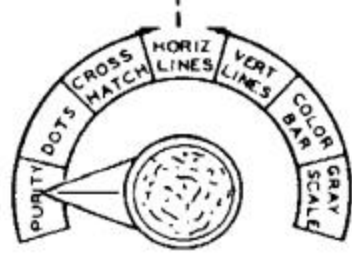
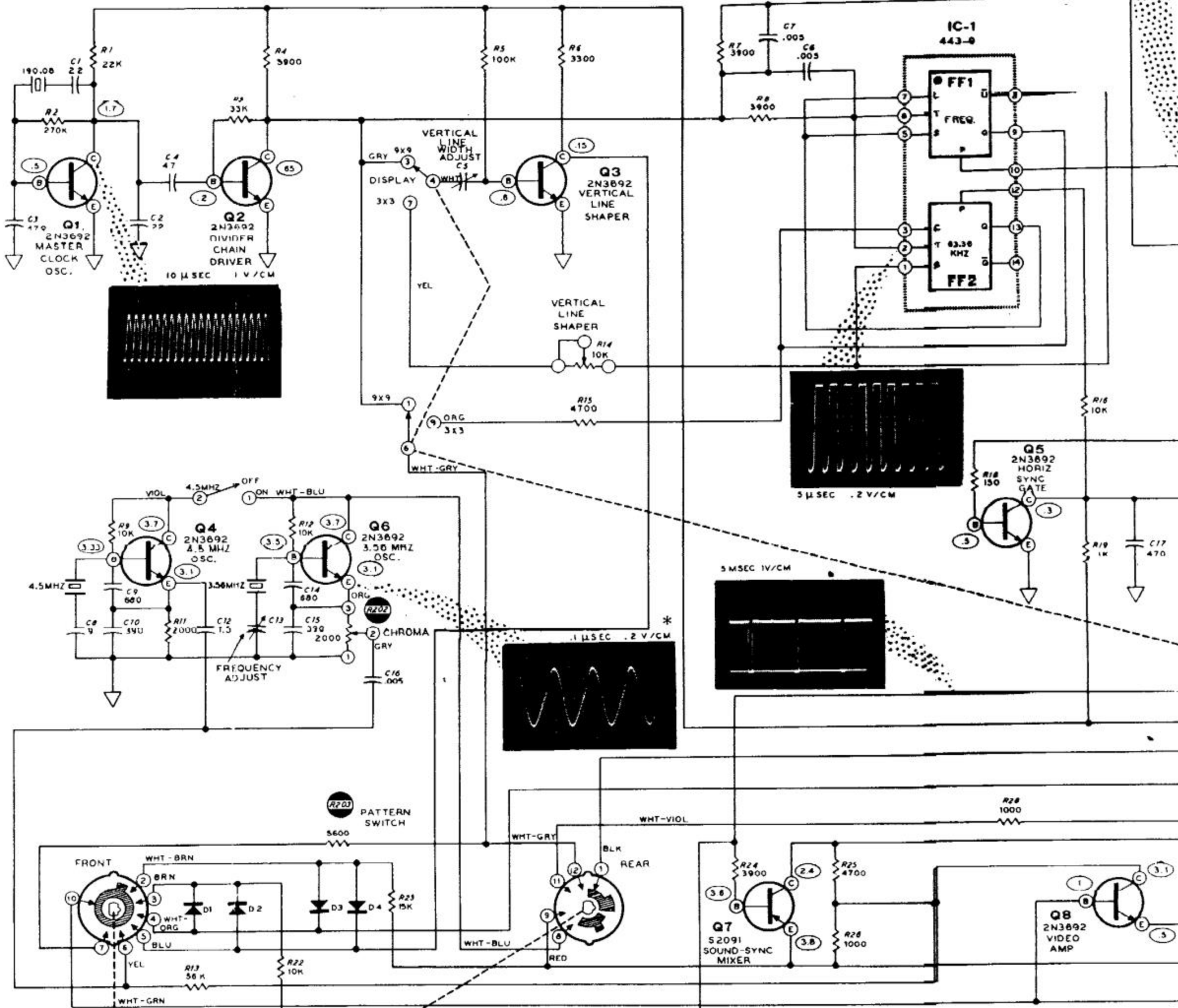
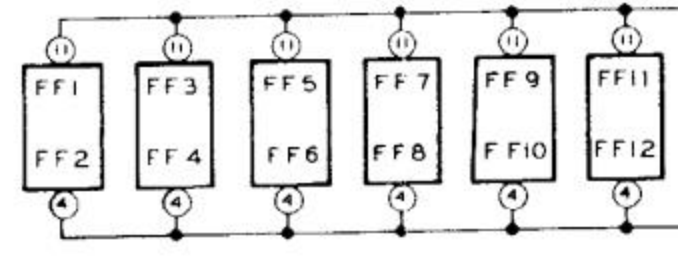
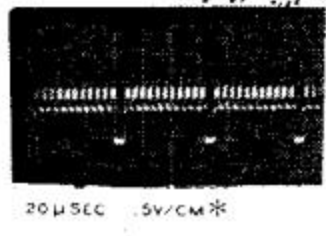
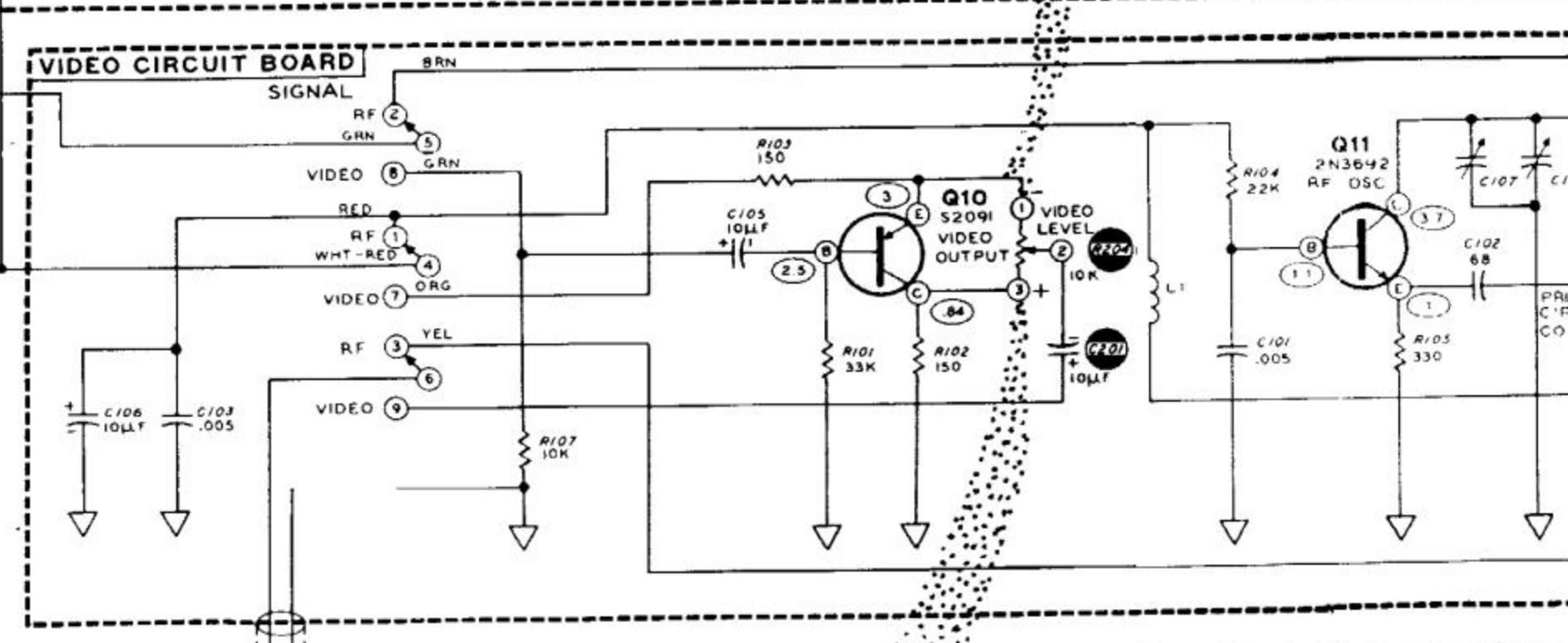
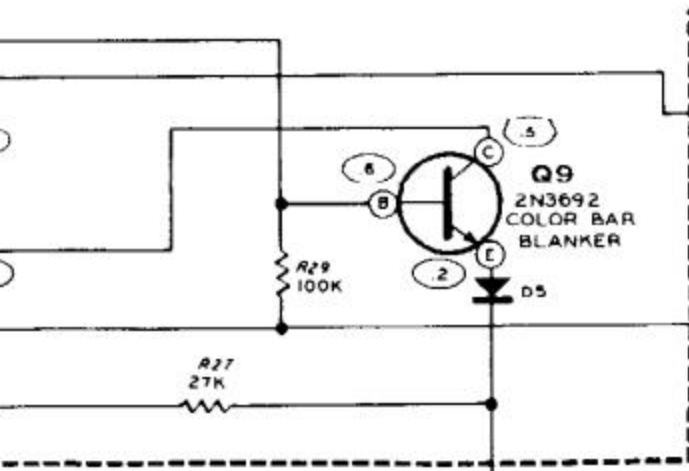
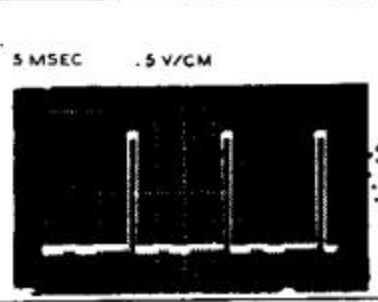
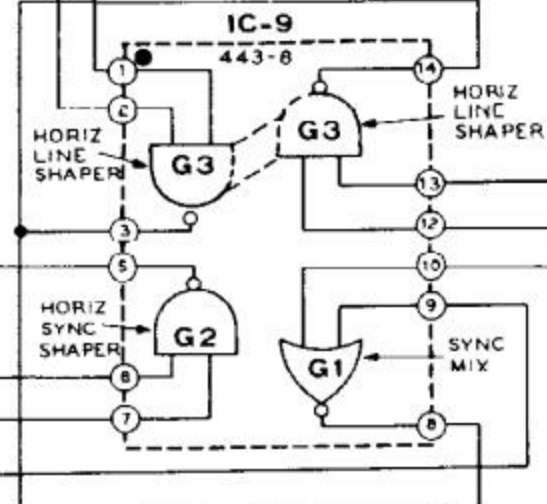
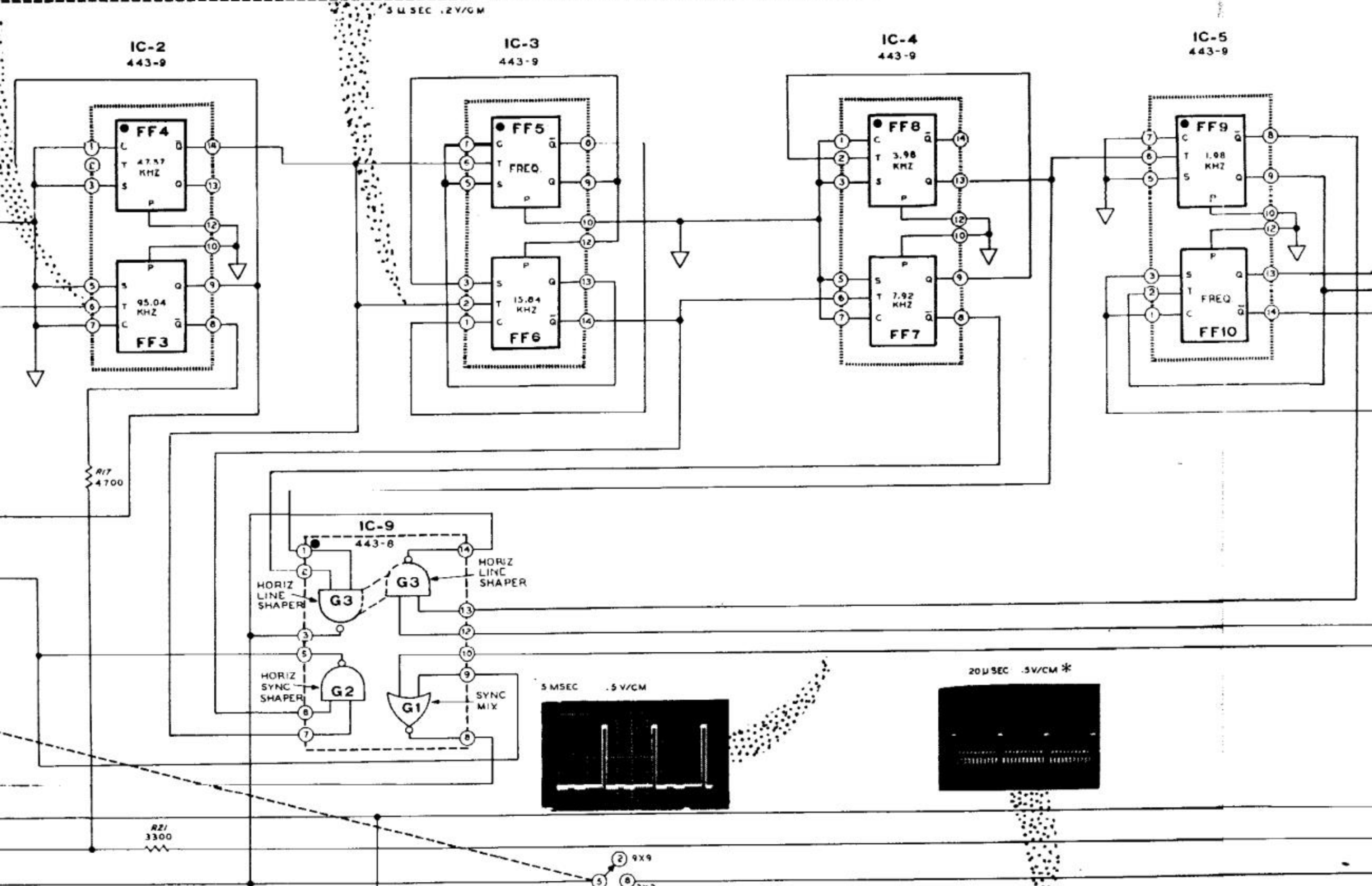


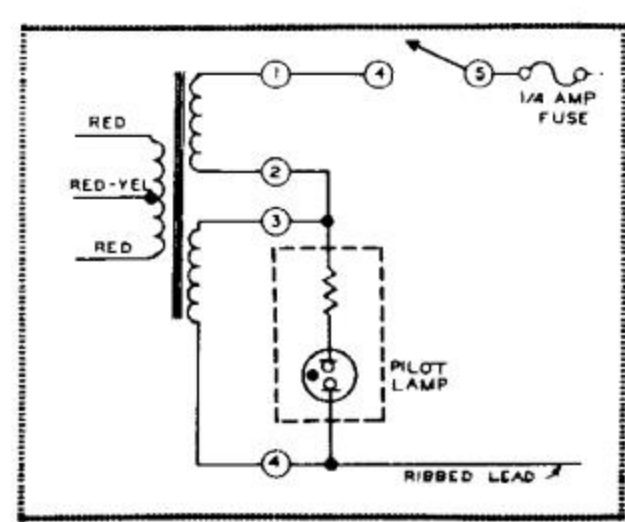
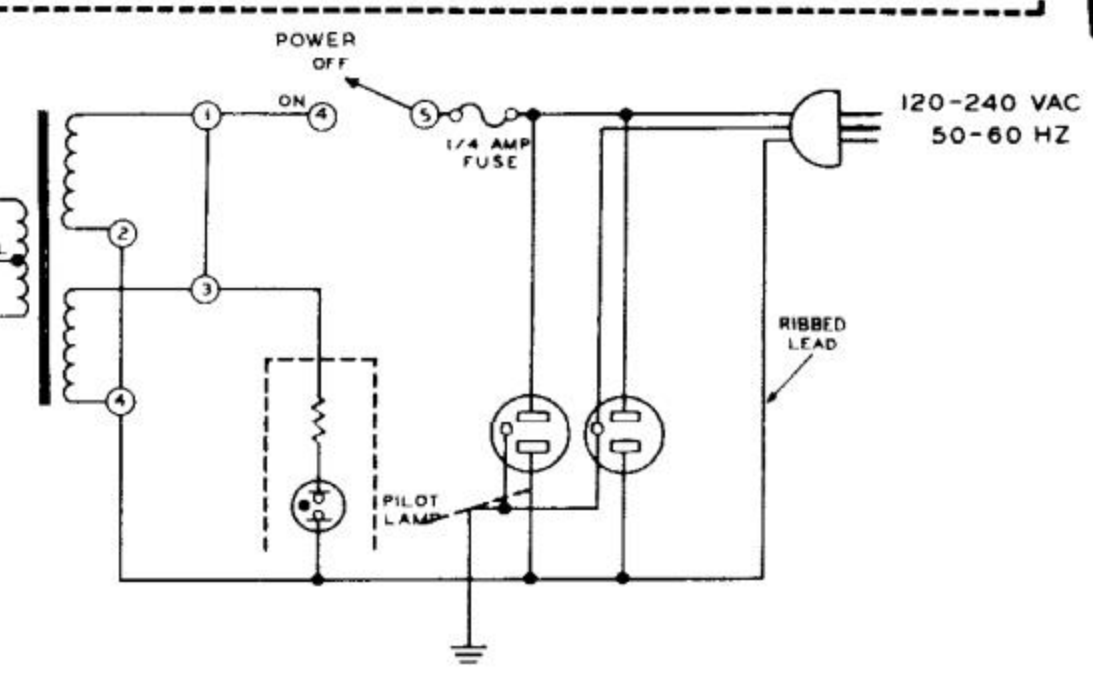
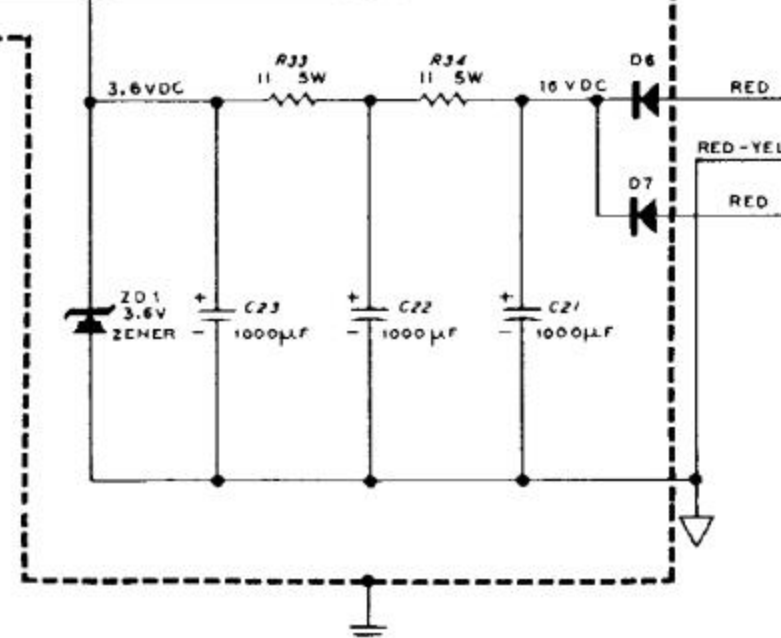
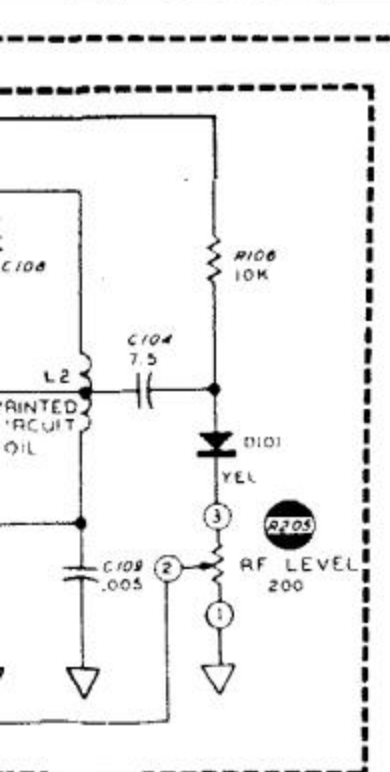
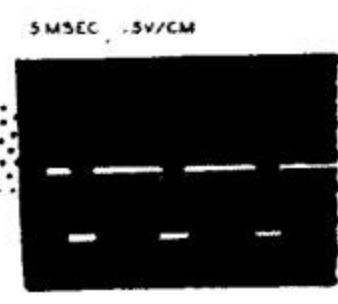
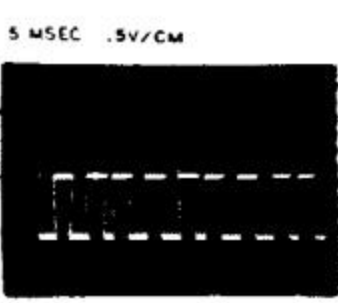
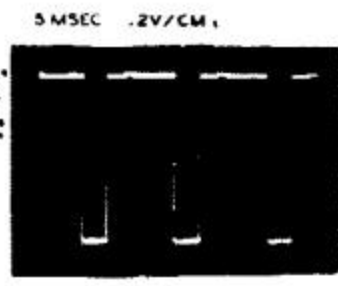
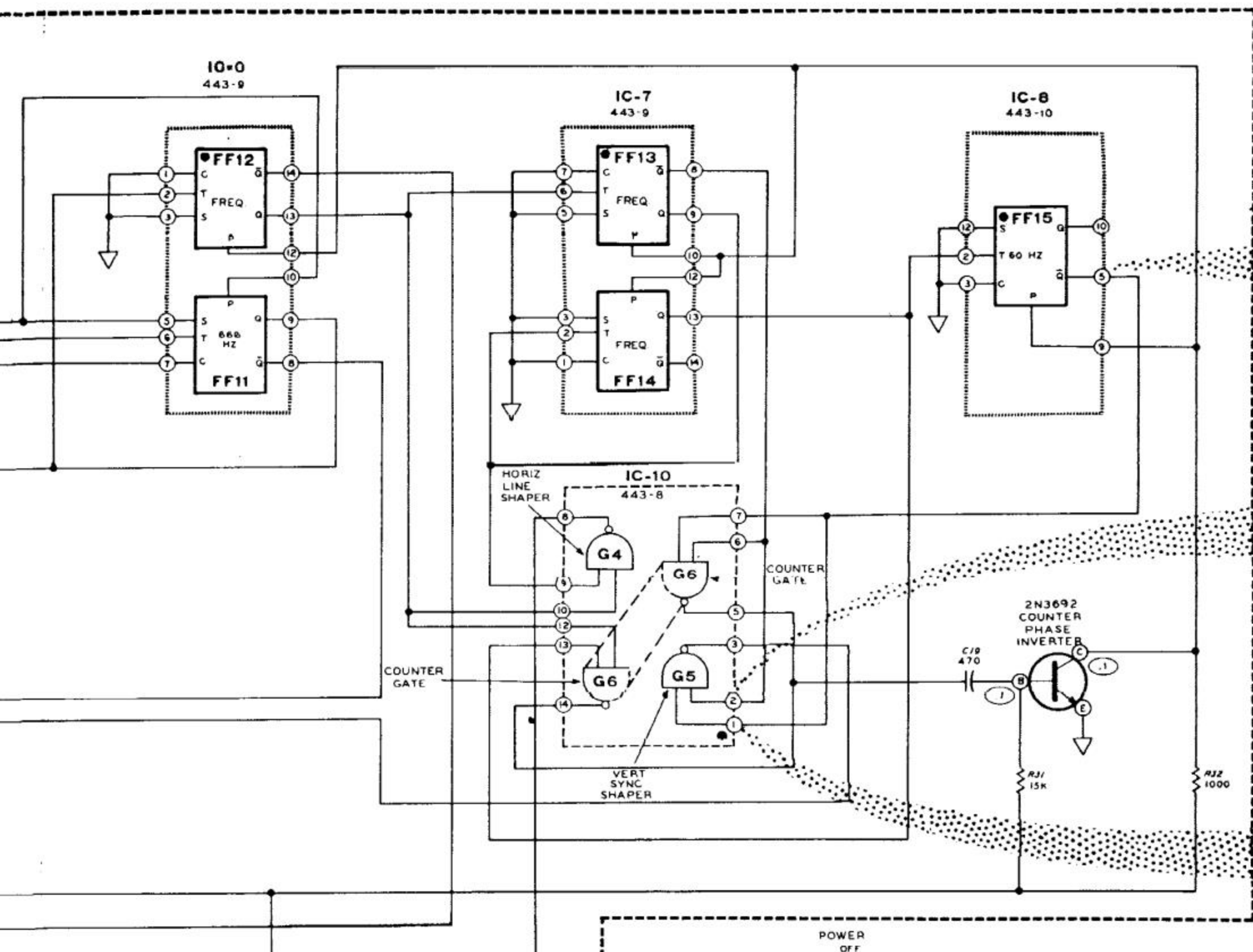
DIVIDER CIRCUIT BOARD

5 μSEC .2V/CM



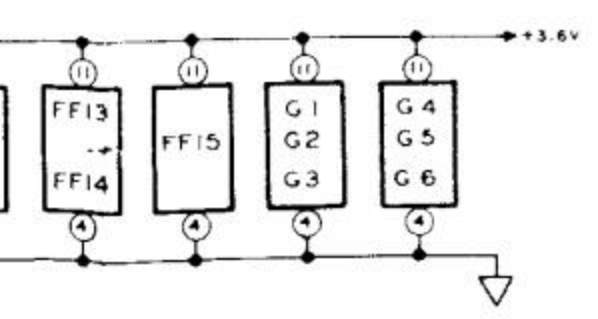
* PATTERN SWITCH MUST BE IN "COLOR BAR" POSITION.

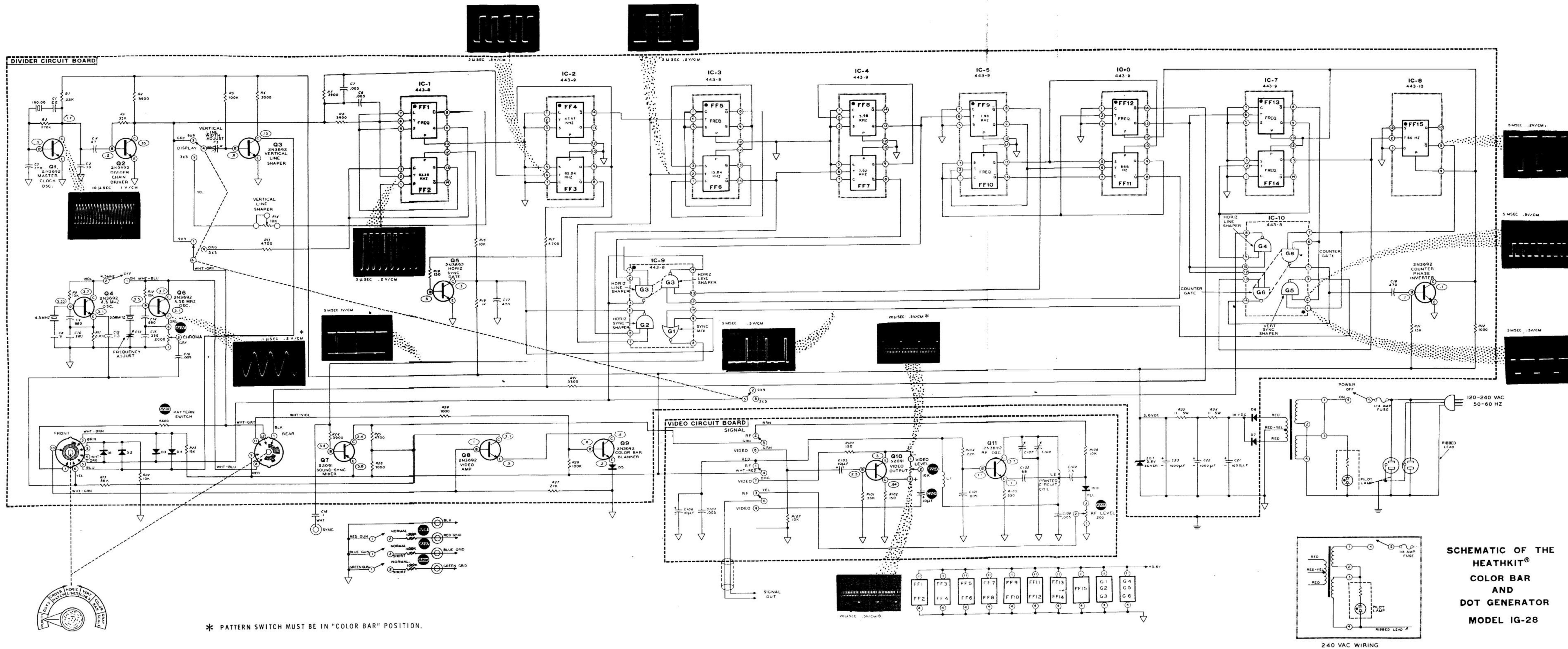




240 VAC WIRING

**SCHEMATIC OF THE
HEATHKIT®
COLOR BAR
AND
DOT GENERATOR
MODEL IG-28**





* PATTERN SWITCH MUST BE IN "COLOR BAR" POSITION.

**SCHEMATIC OF THE
HEATHKIT®
COLOR BAR
AND
DOT GENERATOR
MODEL IG-28**

240 VAC WIRING